

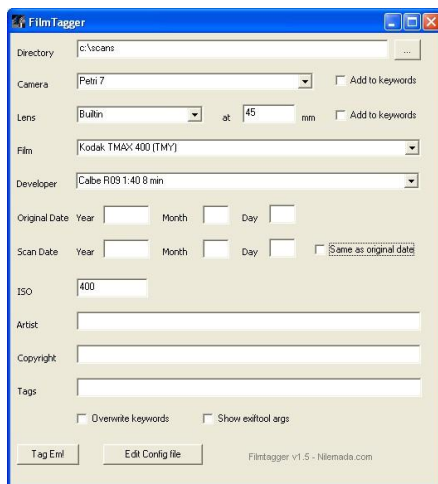


FILMTAGGER

Tag scanned photographs with ease

Introduction and usage

Filmtagger is a very simple tool for setting EXIF/IPTC/XMP tags in scanned photographs to make the photos easier to manage using the standard digital photography management tools available.



Filmtagger scans the directory that has been selected and tags all .jpg and .tif images (note that not all tags are supported in tifs) in that directory with the settings that have been selected.

Any field that is left empty will not be written to in the files.

The date fields and the ISO field will turn read when obviously wrong values have been entered, note however that the program will not stop you from using wrong values; it will only hint you when for example writing 06 instead of 2006 in the year field that something is not quite as it should.



Note that Filmtagger uses [exiftool](#) (in the package on Windows but needs a separate install on mac and linux) by Phil Harvey to do the tagging of the images. When tagging, exiftool will open a DOS window to run the tool. This is normal and can be ignored (windows only).

Also, Filmtagger will not stop you from using illegal values in tags, but it will show any error messages produced by exiftool so that you can see if there were problems.

Below is a table with all the tags that Filmtagger will alter and what information that will be entered into that tag.

Tag name	Tag type	Information inserted
Make	EXIF	The Make of the camera can be seen in the .ini file (see below). The camera entries there are formatted as Model=Make
Model	EXIF	The entire string from the Camera field
LensModel	XMP	The entire string from the Lens field
Lens	EXIF	The entire string from the Lens field
FocalLength	EXIF	The value entered in focal length field

Copyright	EXIF	The entire string from the Copyright field
CopyrightNotice	IPTC	The entire string from the Copyright field
Artist	EXIF	The entire string from the Artist field
ISO	EXIF	The entire string from the ISO field
DateTimeOriginal	EXIF	The string from the date field with 00:00:00 added
CreateDate	EXIF	The string from the date field with 00:00:00 added if “Same as original date” checkbox is checked, else the string from the scan date field with 00:00:00 added
Keywords	IPTC	<p>All the shown in the list below. If the checkbox “Overwrite keywords” is checked, all previous content in the Keywords field will be overwritten. If it’s unchecked, the new information is appended to the old (good if you’ve already added some keywords to the photos).</p> <ul style="list-style-type: none"> • All tags from the Tags field • The string from the Film field • All tags associated with the film in the .ini file • The string from the Developer field • All tags associated with the developer in the .ini file • Camera model if “Add to keywords” is checked next to camera information • Lens information if “Add to keywords” is checked next to Lens fields • Focal length with “mm” added if “Add to keywords” is checked next to Lens fields

Configuration

All settings for Filmtagger are available in the file settings.ini in the same directory as Filmtagger (on Mac OS, the settings.ini file is inside the application bundle at contents/MacOS).

The configuration file can also be edited by clicking the “Edit configuration” button, which is the preferred method.

It’s a plain, very simple .ini file that can and should be edited by the user.

An example settings.ini is shown here:

```
[Settings]

[Cameras]
Canon EOS 300=Canon
Canon EOS 500 N=Canon
Petri 7=Petri Camera Company

[Films]
Kodak TMAX 100 (TMX)=1
Kodak TMAX 400 (TMY)=1
```

```
Kodak TMAX P3200 (TMZ)=1
Kodak Tri-X 320 (320TXP)=1
Kodak Tri-X 400 (400TX)=1
```

[Lenses]

```
EF50mm f/1.8=1
EF24-105mm f/4L IS USM=1
Builtin=1
```

As shown above, there are 4 sections in the ini file. One for general settings (here the program will save the last used settings), one for cameras, one for films and one for lenses.

Please feel free to add your preferred cameras, lenses and films in this file (this will make them appear in the appropriate fields in Filmtagger next time it's run).

The format is simple:

```
Name=Value, taglist or 1
```

Where Name is the text you would like to use in your photographs for this particular lens, film or camera and the value is either the make of the camera (as above) or 1. Please see the ini file for more information since it includes comments.

LICENSE

Copyright (c) 2008-2009 Sverrir Valgeirsson

Permission to use, copy, and/or distribute this software for any purpose without fee is hereby granted, provided that the above copyright notice and this permission notice appear in all copies.

THE SOFTWARE IS PROVIDED "AS IS" AND THE AUTHOR DISCLAIMS ALL WARRANTIES WITH REGARD TO THIS SOFTWARE INCLUDING ALL IMPLIED WARRANTIES OF MERCHANTABILITY AND FITNESS. IN NO EVENT SHALL THE AUTHOR BE LIABLE FOR ANY SPECIAL, DIRECT, INDIRECT, OR CONSEQUENTIAL DAMAGES OR ANY DAMAGES WHATSOEVER RESULTING FROM LOSS OF USE, DATA OR PROFITS, WHETHER IN AN ACTION OF CONTRACT, NEGLIGENCE OR OTHER TORTIOUS ACTION, ARISING OUT OF OR IN CONNECTION WITH THE USE OR PERFORMANCE OF THIS SOFTWARE.

Exiftool is provided for convenience and does not fall under this license. The license for exiftool can be found [here](#).

For more information

Updates and more information are available at <http://nilemada.com/>